



## **Women's and girls cricket achievements during 2010**

**ECB are pleased to announce the increase of women's and girls cricket during the 2010 season.**

**This increase compliments annual increases over the last 4 years, demonstrating both ECB and County Cricket Boards commitment to developing girls cricket**

ECB's Development Lead for Women's and girls cricket, Sue Redfern said of this year's participation figures;

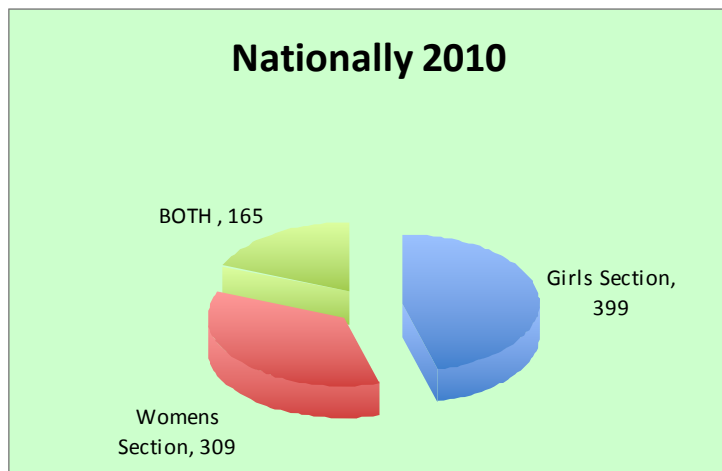
***“ Once again we have seen significant increases in both participation and number of clubs wanting to develop exit routes for girls grow. This is not accidental; it is down to the work of ECB staff, County Cricket Board investment and Clubs who work tirelessly to support their activity and members. Having such great role models in the current England team supports the work we do within development and inspires girls to want to participate. To see there are opportunities for females in cricket is a real motivation to girls now. Cricket really is a viable option for girls whether you want to play socially, volunteer or aspire to become the next generation of England players”.***

Since the introduction of a more robust structure within cricket to support Development, County Cricket Boards have embraced girls' cricket. They have worked with Clubs that want to develop exit routes for girls and have tried to align activity to ensure there are full opportunities from schools to clubs then to county representation.

Within this development competition opportunities continue to be a major factor in the success of girls' cricket, there is still a long way to go in providing full competition structures but cricket has moved significantly over the last 4 years to rectify some of the gaps within the girls' game, 23 of the 39 Counties now offer full competition structures for their girls clubs, and overall 148 senior women's clubs now play in ECB identified competition

This year the following has been achieved:

### Participation and membership within England and Wales based on Club Development plans



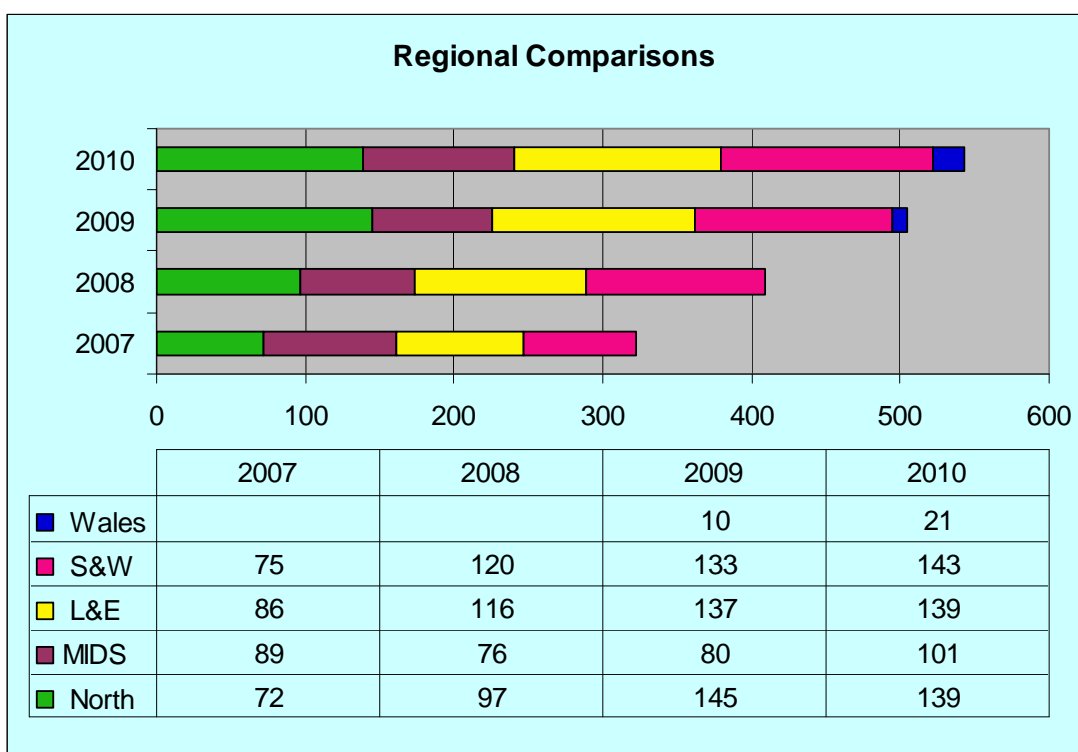
- 16% increase in Girls participation – 13,197 girls now in clubs
- 3% increase in women's participation – 3,817 women now in clubs
- 8% increase of clubs that provide an exit route for either girls or women
- 543 clubs are involved in women's / girls cricket – 444 of these are ECB recognised Focus clubs and 461 of them are Clubmark accredited
- 399 clubs that have an exit route for girls cricket
- 309 clubs that have an exit route for Women's cricket
- 165 clubs that provide both women's and girls cricket
- 145,927 girls in ECB focus clubs were coaching by a school – club link
- Nationally there is now an exit route for females in every 11 clubs (this was every 12 in 2009)



## Competitions



- Asda Kwik Cricket increased by 8% to 3,076 primary schools taking part
- The Indoor Lady Taverners Schools competition increased to 918 teams taking part over the 2 age groups (up 23%)
- The outdoor Lady Taverners Club competition increase to 334 teams taking part (the U13 comp saw an increase of 15.5%)
- 23 Counties now offer localised competition opportunities for girls
- There are 148 women's teams in 21 recognised leagues (county, cross county, regional and national)



## England Women's Coaching Ambassadors



- There are 7 current England Women's Cricketers involved in the Cricket Foundations Chance to shine programme. When not playing these girls work within schools and clubs to enhance girls activity and support the overall Chance to shine programme
- They work in 9 counties regularly and supported 29 counties during the summer holidays with their girls club activity, coaching over 2,000 girls
- They have coached over 6,150 new participants in schools in the last 12 months

## **County Cricket**

- Most counties now offer County Age Group Cricket for U13, 15 and 17's
- Overall across these ages there are 104 squads from 39 counties

### **Aims for Women's and girls cricket moving forward**

- Creating more playing opportunities for girls and women locally through consulted pathways and competition structures
- Increase the number of clubs that are involved in women's and girls' cricket whilst also improving the level of service these clubs give to their members
- Ensuring management and leadership of Women's and girls cricket within County Cricket Boards are robust and equitable
- Working with Counties to develop and recruit people to support women's and girls' cricket:
  - More female coaches
  - More female officials
  - More volunteers and paid staff within women's and girls cricket
  - Improving facilities and accessibility of grounds and equipment for women and girls